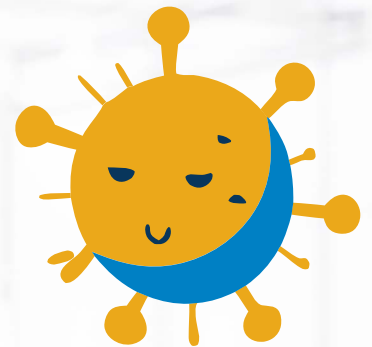
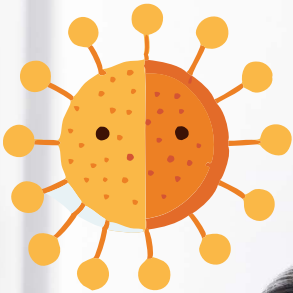


# BE READY FOR RESPIRATORY INFECTION SEASON WITH COVID-19 and FLU A&B COMBO ANTIGEN TESTING

Your **INTERACTIVE** Guide to effectively  
managing COVID-19 and Flu this season



# Are you prepared for respiratory infection season?

The respiratory infection season, typically spans from late fall to early spring, bringing a surge in infections caused by various pathogens, including COVID-19 and influenza. This period overlaps the school year, increasing the potential for transmission among children and their parents.

Implementing a rapid COVID-19 and Flu Combo Antigen Test can help optimize timely and accurate diagnoses, enabling effective management and mitigation of these challenges.



## RESPIRATORY SEASON

November, December, January, February, March

## The challenges when COVID-19 and Flu are cocirculating.<sup>1</sup>



Due to the **similarities in symptoms**, it is difficult to distinguish between symptoms alone.



It is difficult to rely on empirical treatment alone, due to the **difference in recommended antivirals**.



**Coinfection is possible**, which can lead to an increase mortality rate and healthcare expenditures.



# What you need to know about COVID-19 and Flu A&B Combo Antigen Testing.

## What is it?

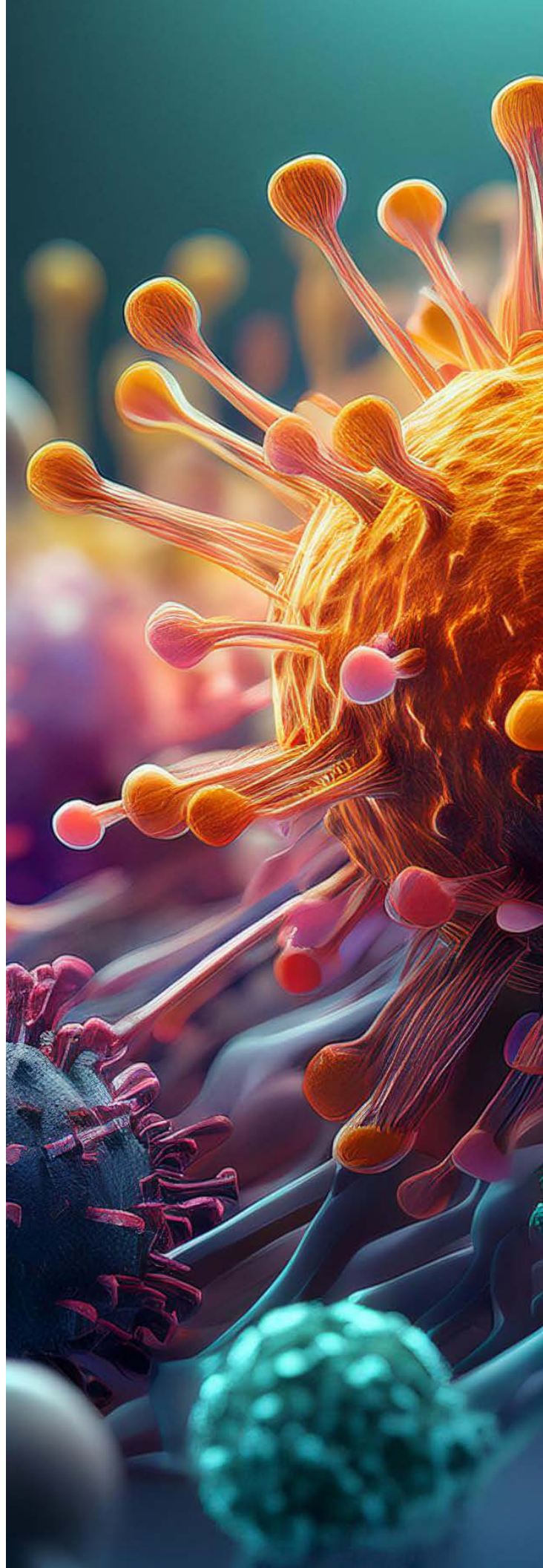
1 A COVID-19 and Flu A&B Combo Test simultaneously detects and differentiates between COVID-19, Flu A, and Flu B from only one swab, saving time and resources compared to running separate tests. These tests can be performed at the point-of-care and results are usually available within 15 minutes or less.

## What's the clinical value?

2 By differentiating between COVID-19, Flu A, and Flu B, healthcare providers can make more informed decisions when treating patients with similar symptoms, but completely different treatment protocols. Consequently, patients benefit from more accurate care plans, potentially faster recovery times, and reduced risk of complications.

## What's the operational value?

3 A COVID-19 and Flu A&B Combo Test allows for a more efficient utilization of healthcare resources. For example, by using only one test to simultaneously test for multiple viral pathogens, it streamlines the overall diagnostic process and eliminates the need to perform separate tests for different pathogens.



# Answering the need to clinically differentiate between COVID-19 and Flu.

## Introducing the OSOM® Flu SARS-CoV-2 Combo Test.

Discover how you can make more informed decisions when treating patients who are symptomatic with viral infections that have similar symptoms, but different treatment protocols.



Discover how the OSOM® Flu SARS-CoV-2 Combo Test can help you meet your operational, clinical, and financial needs.

### OPERATIONAL NEED



From only one sample, simultaneously detect and differentiate between three viral infections in just 10 minutes.

[Learn More >](#)

### CLINICAL NEED



Proven analytical performance to help reduce the risk of misdiagnosis and inappropriate treatment.

[Learn More >](#)

### FINANCIAL NEED



A unique QC Inside® feature allowing for additional testing components for external QC testing.

[Learn More >](#)

# Meet your operational goal with a more comprehensive test.

Discover a more efficient testing process for COVID-19 and Flu.

## TRADITIONAL ANTIGEN TESTING

## COMBO ANTIGEN TESTING

1



Collect two samples



Collect only one sample

2



Perform two different tests



Perform just one test

3



Wait for two separate test results  
(30 minutes or less)



Wait for only one test result  
(15 minutes or less)

4



Individual results in separate reports



Comprehensive results in a single report

See how easy it is to perform the  
**OSOM® Flu SARS-CoV-2 Combo Test.**

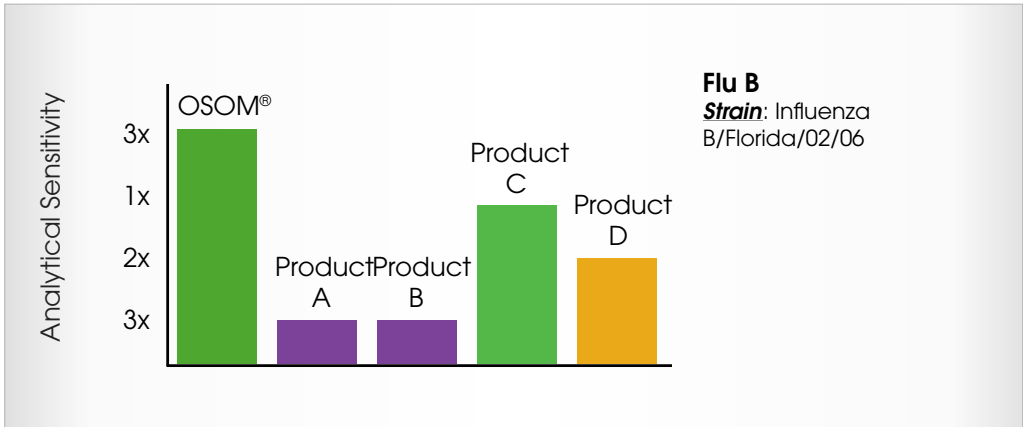
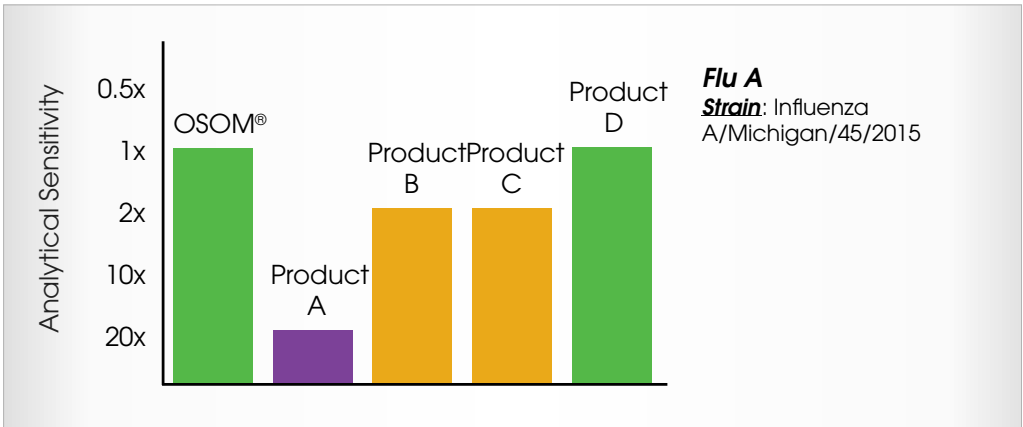
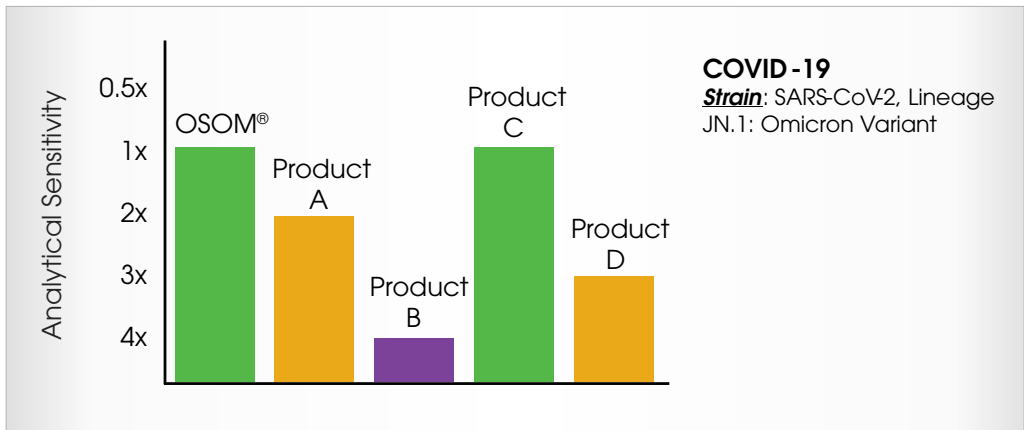
DISCOVER MORE >

# Proven analytical performance to help meet your clinical needs.

## Consider analytical studies when selecting a test.

Limit of Detection (LOD) is a useful surrogate measure for clinical sensitivity. It's the most standardized approach for conducting head-to-head comparisons of multiple antigen rapid tests. The OSOM® Flu SARS-CoV-2 Combo Test went through a comprehensive study, which proved the analytical sensitivity matches or exceeds that of other antigen combo tests.

Download the entire study today! [DOWNLOAD >](#)





# Improve your cost efficiency with two extra tests at no additional charge.

## The value of QC Inside®.

Performing external quality control testing consumes test components, which reduces the number of tests available for testing patient samples.



For all CLIA-waived tests, it is recommended to test one positive and one negative control every time there is a:



Change in lot number



New product shipment



New untrained user

## In a typical 25 test kit you get:

25 tests for patients + 2 tests for Quality Control  
= 27 Tests Total

**Download your free QC Inside® infographic today!**

**DOWNLOAD**

# Stay ahead of respiratory infection season and make a difference in your patient's health.

## Additional Resources.

The OSOM® Flu SARS-CoV-2 Combo Test is proudly manufactured in the USA.

## Learn more about the OSOM® Flu SARS-CoV-2 Combo Test.

VISIT PAGE



### References:

1. [Garg, I. COVID-19 and Influenza Coinfection Outcomes among Hospitalized Patients in the US. Vaccines 2022, 10, 2159.](#)
2. [Centers for Medicare & Medicaid Services \(CDC\). Individualized Quality Control Plan.](#)

In the USA, this product has not been FDA cleared or approved but has been authorized by FDA under an Emergency Use Authorization. This product has been authorized only for the detection of proteins from SARS-CoV-2, influenza A and influenza B, not for any other viruses or pathogens. The emergency use of this product is only authorized for the duration of the declaration that circumstances exist justifying the authorization of emergency use of in vitro diagnostics for detection and/or diagnosis of COVID-19 under Section 564(b)(1) of the Federal Food, Drug, and Cosmetic Act, 21 U.S.C. § 360bbb-3(b)(1), unless the declaration is terminated, or authorization is revoked sooner.

**SEKISUI**  
DIAGNOSTICS

*Because every result matters™*